

4Gb (x16/x32) Mobile LPDDR4/LPDDR4X with ECC

FEATURES

- Configuration:
 - 256Mb x16 x 1 channel
 - 128Mb x16 x 2 channels
 - 8 internal banks per each channel
- On-Chip ECC:
 - Single-bit error correction (per 64-bits)
- Low-voltage Core and I/O Power Supplies
 - VDD1 = 1.70-1.95V
 - VDD2 = 1.06-1.17V
 - VDDQ = 1.06-1.17V (LPDDR4)
 - VDDQ = 0.57-0.65V (LPDDR4X)
- LVSTL(Low Voltage Swing Terminated Logic) I/O Interface
- Internal VREF and VREF Training
- Dynamic ODT :
 - DQ ODT :VSSQ Termination
 - CA ODT :VSS Termination
- Max. Clock Frequency : 1.6GHz (3.2Gbps)
- 16n Pre-fetch DDR architecture
- Single data rate (multiple cycles) command/ address bus
- Bidirectional/differential data strobe per byte of data (DQS/DQS#)
- Programmable burst lengths (16 or 32)
- ZQ Calibration
- Operation Temperature
 - Industrial (T_c = -40°C to 85°C)
 - Automotive, A1 (T_c = -40°C to 85°C)
 - Automotive, A2 (T_c = -40°C to 105°C)
- Clock-Stop capability

ADVANCED INFORMATION APRIL 2019

DESCRIPTION

The IS43/46LQ16256EA/EAL and IS43/46LQ32128EA/EAL are 4Gbit CMOS LPDDR4 SDRAM. The device is orga-nized as 1/2 channels per device, and individual channel is 8-banks and 16-bits. This product uses a double-data-rate architecture to achieve high-speed operation. The double data rate architecture is essentially a 16N prefetch architecture with an interface designed to transfer two data words per clock cycle at the I/O pins. This product offers fully synchronous operations referenced to both rising and falling edges of the clock. The data paths are internally pipelined and 16n bits prefetched to achieve very high bandwidth.

- On-chip temperature sensor whose status can be read from MR4
- 200-ball x16/x32 Discrete Package (0.80mm x 0.65mm)

ADDRESS TABLE *

Parameter		
# of Channel	1	2
Row Addresses	R0-R14	R0-R13
Column Addresses	C0-C9	
Bank Addresses	BA0-BA2	

Note: Address information is per channel base.

KEY TIMING PARAMETERS

Speed Grade	Freq. (MHz)	Data Rate (Mb/s)	Write Latency		Read Latency	
			Set A	Set B	DBI OFF	DBI ON
-062	1600	3200	14	26	28	32
-075	1333	2666	12	22	24	28
-093	1066	2133	10	18	20	22

Note: Other clock frequencies/data rates supported; please refer to AC timing tables.

Copyright © 2019 Integrated Silicon Solution, Inc. All rights reserved. ISSI reserves the right to make changes to this specification and its products at any time without notice. ISSI assumes no liability arising out of the application or use of any information, products or services described herein. Customers are advised to obtain the latest version of this device specification before relying on any published information and before placing orders for products.

Integrated Silicon Solution, Inc. does not recommend the use of any of its products in life support applications where the failure or malfunction of the product can reasonably be expected to cause failure of the life support system or to significantly affect its safety or effectiveness. Products are not authorized for use in such applications unless Integrated Silicon Solution, Inc. receives written assurance to its satisfaction, that:

- the risk of injury or damage has been minimized;
- the user assume all such risks; and
- potential liability of Integrated Silicon Solution, Inc is adequately protected under the circumstances

1. BALL ASSIGNMENTS AND DESCRIPTIONS (for x16)

200-ball x16 Discrete Package, 0.80mm x 0.65mm using MO-311

	1	2	3	4	5	6	7	8	9	10	11	12	
0.80mm Pitch	A	DNU	DNU	VSS	VDD2	ZQ0		NC	VDD2	VSS	DNU/ERR_A	DNU	
	B	DNU	DQ0_A	VDDQ	DQ7_A	VDDQ		VDDQ	DQ15_A	VDDQ	DQ8_A	DNU	
	C	VSS	DQ1_A	DMI0_A	DQ6_A	VSS		VSS	DQ14_A	DMI1_A	DQ9_A	VSS	
	D	VDDQ	VSS	DQS0_T_A	VSS	VDDQ		VDDQ	VSS	DQS1_T_A	VSS	VDDQ	
	E	VSS	DQ2_A	DQS0_C_A	DQ5_A	VSS		VSS	DQ13_A	DQS1_C_A	DQ10_A	VSS	
	F	VDD1	DQ3_A	VDDQ	DQ4_A	VDD2		VDD2	DQ12_A	VDDQ	DQ11_A	VDD1	
	G	VSS	ODT_CA_A	VSS	VDD1	VSS		VSS	VDD1	VSS	NC	VSS	
	H	VDD2	CA0_A	NC	CS0_A	VDD2		VDD2	CA2_A	CA3_A	CA4_A	VDD2	
	J	VSS	CA1_A	VSS	CKE0_A	NC		CK_t_A	CK_c_A	VSS	CA5_A	VSS	
	K	VDD2	VSS	VDD2	VSS	NC		NC	VSS	VDD2	VSS	VDD2	
	L												
	0.65mm Pitch	M											
N		VDD2	VSS	VDD2	VSS	NC		NC	VSS	VDD2	VSS	VDD2	
P		VSS	NC	VSS	NC	NC		NC	NC	VSS	NC	VSS	
R		VDD2	NC	NC	NC	VDD2		VDD2	NC	NC	NC	VDD2	
T		VSS	NC	VSS	VDD1	VSS		VSS	VDD1	VSS	RESET_N	VSS	
U		VDD1	NC	VDDQ	NC	VDD2		VDD2	NC	VDDQ	NC	VDD1	
V		VSS	NC	NC	NC	VSS		VSS	NC	NC	NC	VSS	
W		VDDQ	VSS	NC	VSS	VDDQ		VDDQ	VSS	NC	VSS	VDDQ	
Y		VSS	NC	NC	NC	VSS		VSS	NC	NC	NC	VSS	
AA		DNU	NC	VDDQ	NC	VDDQ		VDDQ	NC	VDDQ	NC	DNU	
AB		DNU	DNU	VSS	VDD2	VSS		VSS	VDD2	VSS	DNU	DNU	

- NOTE 1 0.8mm pitch (X-axis), 0.65mm pitch (Y-axis), 22 rows.
- NOTE 2 Top View, A1 in top left corner.
- NOTE 3 The ODT_CA pin is ignored by LPDDR4X devices.
- NOTE 4 A11 will be ERR_A in optional B2 package.

2. BALL ASSIGNMENTS AND DESCRIPTIONS (for x32)

200-ball x32 Discrete Package, 0.80mm x 0.65mm using MO-311

	1	2	3	4	5	6	7	8	9	10	11	12
0.80mm Pitch	A	DNU	DNU	VSS	VDD2	ZQ0		NC	VDD2	VSS	DNU/ ERR_A	DNU
	B	DNU	DQ0_A	VDDQ	DQ7_A	VDDQ		VDDQ	DQ15_A	VDDQ	DQ8_A	DNU
	C	VSS	DQ1_A	DMI0_A	DQ6_A	VSS		VSS	DQ14_A	DMI1_A	DQ9_A	VSS
	D	VDDQ	VSS	DQS0_T_A	VSS	VDDQ		VDDQ	VSS	DQS1_T_A	VSS	VDDQ
	E	VSS	DQ2_A	DQS0_C_A	DQ5_A	VSS		VSS	DQ13_A	DQS1_C_A	DQ10_A	VSS
	F	VDD1	DQ3_A	VDDQ	DQ4_A	VDD2		VDD2	DQ12_A	VDDQ	DQ11_A	VDD1
	G	VSS	ODT_CA_A ⁽³⁾	VSS	VDD1	VSS		VSS	VDD1	VSS	NC	VSS
	H	VDD2	CA0_A	NC	CS0_A	VDD2		VDD2	CA2_A	CA3_A	CA4_A	VDD2
	J	VSS	CA1_A	VSS	CKE0_A	NC		CK_t_A	CK_c_A	VSS	CA5_A	VSS
	K	VDD2	VSS	VDD2	VSS	NC		NC	VSS	VDD2	VSS	VDD2
	0.65mm Pitch	L										
M												
N		VDD2	VSS	VDD2	VSS	NC		NC	VSS	VDD2	VSS	VDD2
P		VSS	CA1_B	VSS	CKE0_B	NC		CK_T_B	CK_C_B	VSS	CA5_B	VSS
R		VDD2	CA0_B	NC	CS0_B	VDD2		VDD2	CA2_B	CA3_B	CA4_B	VDD2
T		VSS	ODT_CA_B ⁽³⁾	VSS	VDD1	VSS		VSS	VDD1	VSS	RESET_N	VSS
U		VDD1	DQ3_B	VDDQ	DQ4_B	VDD2		VDD2	DQ12_B	VDDQ	DQ11_B	VDD1
V		VSS	DQ2_B	DQS0_C_B	DQ5_B	VSS		VSS	DQ13_B	DQS1_C_B	DQ10_B	VSS
W		VDDQ	VSS	DQS0_T_B	VSS	VDDQ		VDDQ	VSS	DQS1_T_B	VSS	VDDQ
Y		VSS	DQ1_B	DMI0_B	DQ6_B	VSS		VSS	DQ14_B	DMI1_B	DQ9_B	VSS
AA		DNU	DQ0_B	VDDQ	DQ7_B	VDDQ		VDDQ	DQ15_B	VDDQ	DQ8_B	DNU
AB	DNU	DNU	VSS	VDD2	VSS		VSS	VDD2	VSS	DNU/ ERR_B	DNU	

NOTE 1 0.8mm pitch (X-axis), 0.65mm pitch (Y-axis), 22 rows.

NOTE 2 Top View, A1 in top left corner.

NOTE 3 The ODT_CA pin is ignored by LPDDR4X devices.

NOTE 4 A11 will be ERR_A. AB11 will be ERR_B in optional B2 package.

2. INPUT/OUTPUT FUNTIONAL DESCRIPTION

2.1 PAD DEFINITION AND DESCRIPTION

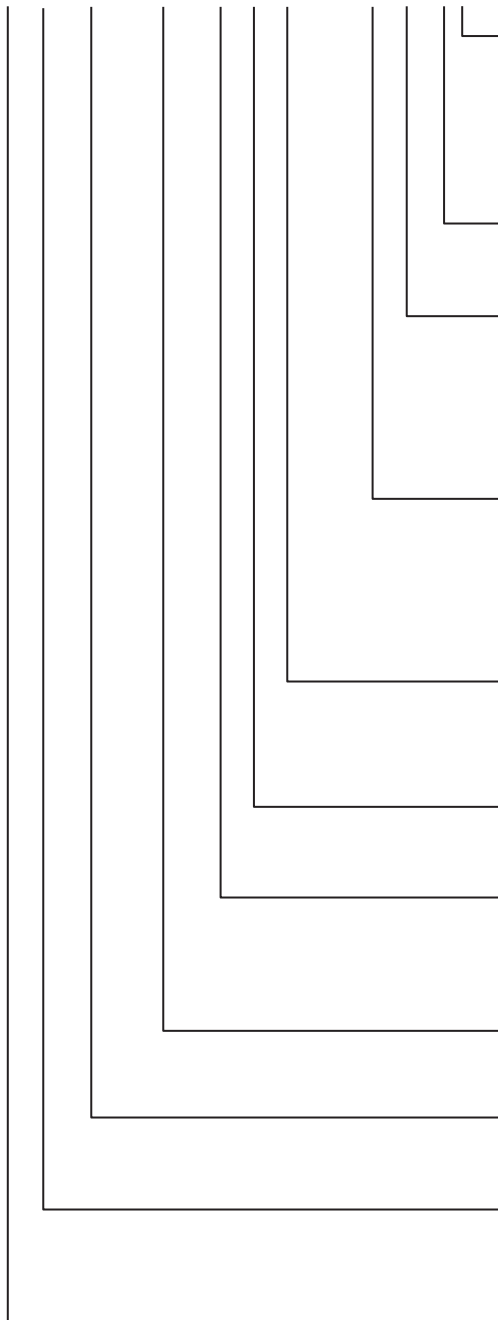
Table 2.1 — Pad Definition and Description

Symbol	Type	Description
CK_t_A, CK_c_A, CK_t_B, CK_c_B	Input	Clock: CK_t and CK_c are differential clock inputs. All address, command, and control input signals are sampled on the crossing of the positive edge of CK_t and the negative edge of CK_c. AC timings for CA parameters are referenced to CK. Each channel (A & B) has its own clock pair.
CKE_A CKE_B	Input	Clock Enable: CKE HIGH activates and CKE LOW deactivates the internal clock circuits, input buffers, and output drivers. Power-saving modes are entered and exited via CKE transitions. CKE is part of the command code. Each channel (A & B) has its own CKE signal.
CS_A CS_B	Input	Chip Select: CS is part of the command code. Each channel (A & B) has its own CS signal.
CA[5:0]_A CA[5:0]_B	Input	Command/Address Inputs: CA signals provide the Command and Address inputs according to Table 63 — Command Truth Table. Each channel (A&B) has its own CA signals.
ODT_CA_A ODT_CA_B	Input	CA ODT Control: The ODT_CA pin is used in conjunction with the Mode Register to turn on/off the On-Die-Termination for CA pins.
DQ[15:0]_A, DQ[15:0]_B	I/O	Data Input/Output: Bi-direction data bus.
DQS[1:0]_t_A, DQS[1:0]_c_A, DQS[1:0]_t_B, DQS[1:0]_c_B	I/O	Data Strobe: DQS_t and DQS_c are bi-directional differential output clock signals used to strobe data during a READ or WRITE. The Data Strobe is generated by the DRAM for a READ and is edge-aligned with Data. The Data Strobe is generated by the Memory Controller for a WRITE and must arrive prior to Data. Each byte of data has a Data Strobe signal pair. Each channel (A & B) has its own DQS strobes.
DMI[1:0]_A, DMI[1:0]_B	I/O	Data Mask Inversion: DMI is a bi-directional signal which is driven HIGH when the data on the data bus is inverted, or driven LOW when the data is in its normal state. Data Inversion can be disabled via a mode register setting. Each byte of data has a DMI signal. Each channel (A & B) has its own DMI signals.
ZQ	Reference	Calibration Reference: Used to calibrate the output drive strength and the termination resistance. There is one ZQ pin per die. The ZQ pin shall be connected to V _{DDQ} through a 240Ω ± 1% resistor.
V _{DDQ} , V _{DD1} , V _{DD2}	Supply	Power Supplies: Isolated on the die for improved noise immunity.
V _{SS} , V _{SSQ}	GND	Ground Reference: Power supply ground reference
RESET_n	Input	RESET: When asserted LOW, the RESET_n signal resets both channels of the die.

Note 1 Optional ERR_A, ERR_B in optional B2 package will be described in section 11

ORDERING INFORMATION – Valid Part Numbers

IS 43 LQ 32128 E A - 062 B L !



TEMPERATURE RANGE

I = Industrial (-40°C to +85°C)
A1 = Automotive A1 Grade (-40°C to +85°C)
A2 = Automotive A2 Grade (-40°C to +105°C)

PACKAGING CONTENT

L = RoHS compliant

Package Type

B = 200-ball BGA
B2 = 200-ball BGA with ERR

Speed Grade

093 = 1066MHz
075 = 1333MHz
062 = 1600MHz

VDDQ

Blank = Regular VDDQ
L = Low VDDQ (LPDDR4X)

Die Generation

A = 1st Generation

ECC support

E = On Chip ECC
Blank = No ECC

Density

32128 = 128Mb x 32 (4Gb)

Device Type

LQ = LPDDR4 DRAM

Product Family

43 = DDR DRAM
46 = Automotive DDR DRAM

ISSI Prefix

IS = Integrated Silicon Solution Inc.

ORDERING INFORMATION, 256Mb x 16 LPDDR4

Industrial Range: T_c = -40°C to +85°C

Clock	Speed Grade	Order Part No.	Package
1066 MHz	-093	IS43LQ16256EA-093BLI	200 ball FBGA, lead free
		IS43LQ16256EA-093B2LI	200 ball FBGA, lead free, ERR
1333 MHz	-075	IS43LQ16256EA-075BLI	200 ball FBGA, lead free
		IS43LQ16256EA-075B2LI	200 ball FBGA, lead free, ERR
1600 MHz	-062	IS43LQ16256EA-062BLI	200 ball FBGA, lead free
		IS43LQ16256EA-062B2LI	200 ball FBGA, lead free, ERR

Automotive, A1 Range: T_c = -40°C to +85°C

Clock	Speed Grade	Order Part No.	Package
1066 MHz	-093	IS46LQ16256EA-093BLA1	200 ball FBGA, lead free
		IS46LQ16256EA-093B2LA1	200 ball FBGA, lead free, ERR
1333 MHz	-075	IS46LQ16256EA-075BLA1	200 ball FBGA, lead free
		IS46LQ16256EA-075B2LA1	200 ball FBGA, lead free, ERR
1600 MHz	-062	IS46LQ16256EA-062BLA1	200 ball FBGA, lead free
		IS46LQ16256EA-062B2LA1	200 ball FBGA, lead free, ERR

Automotive, A2 Range: T_c = -40°C to +105°C

Clock	Speed Grade	Order Part No.	Package
1066 MHz	-093	IS46LQ16256EA-093BLA2	200 ball FBGA, lead free
		IS46LQ16256EA-093B2LA2	200 ball FBGA, lead free, ERR
1333 MHz	-075	IS46LQ16256EA-075BLA2	200 ball FBGA, lead free
		IS46LQ16256EA-075B2LA2	200 ball FBGA, lead free, ERR
1600 MHz	-062	IS46LQ16256EA-062BLA2	200 ball FBGA, lead free
		IS46LQ16256EA-062B2LA2	200 ball FBGA, lead free, ERR

ORDERING INFORMATION, 256Mb x 16 LPDDR4X

Industrial Range: T_c = -40°C to +85°C

Clock	Speed Grade	Order Part No.	Package
1066 MHz	-093	IS43LQ16256EAL-093BLI	200 ball FBGA, lead free
		IS43LQ16256EAL-093B2LI	200 ball FBGA, lead free, ERR
1333 MHz	-075	IS43LQ16256EAL-075BLI	200 ball FBGA, lead free
		IS43LQ16256EAL-075B2LI	200 ball FBGA, lead free, ERR
1600 MHz	-062	IS43LQ16256EAL-062BLI	200 ball FBGA, lead free
		IS43LQ16256EAL-062B2LI	200 ball FBGA, lead free, ERR

Automotive, A1 Range: T_c = -40°C to +85°C

Clock	Speed Grade	Order Part No.	Package
1066 MHz	-093	IS46LQ16256EAL-093BLA1	200 ball FBGA, lead free
		IS46LQ16256EAL-093B2LA1	200 ball FBGA, lead free, ERR
1333 MHz	-075	IS46LQ16256EAL-075BLA1	200 ball FBGA, lead free
		IS46LQ16256EAL-075B2LA1	200 ball FBGA, lead free, ERR
1600 MHz	-062	IS46LQ16256EAL-062BLA1	200 ball FBGA, lead free
		IS46LQ16256EAL-062B2LA1	200 ball FBGA, lead free, ERR

Automotive, A2 Range: T_c = -40°C to +105°C

Clock	Speed Grade	Order Part No.	Package
1066 MHz	-093	IS46LQ16256EAL-093BLA2	200 ball FBGA, lead free
		IS46LQ16256EAL-093B2LA2	200 ball FBGA, lead free, ERR
1333 MHz	-075	IS46LQ16256EAL-075BLA2	200 ball FBGA, lead free
		IS46LQ16256EAL-075B2LA2	200 ball FBGA, lead free, ERR
1600 MHz	-062	IS46LQ16256EAL-062BLA2	200 ball FBGA, lead free
		IS46LQ16256EAL-062B2LA2	200 ball FBGA, lead free, ERR

ORDERING INFORMATION, 128Mb x 32 LPDDR4

Industrial Range: $T_c = -40^{\circ}\text{C}$ to $+85^{\circ}\text{C}$

Clock	Speed Grade	Order Part No.	Package
1066 MHz	-093	IS43LQ32128EA-093BLI	200 ball FBGA, lead free
		IS43LQ32128EA-093B2LI	200 ball FBGA, lead free, ERR
1333 MHz	-075	IS43LQ32128EA-075BLI	200 ball FBGA, lead free
		IS43LQ32128EA-075B2LI	200 ball FBGA, lead free, ERR
1600 MHz	-062	IS43LQ32128EA-062BLI	200 ball FBGA, lead free
		IS43LQ32128EA-062B2LI	200 ball FBGA, lead free, ERR

Automotive, A1 Range: $T_c = -40^{\circ}\text{C}$ to $+85^{\circ}\text{C}$

Clock	Speed Grade	Order Part No.	Package
1066 MHz	-093	IS46LQ32128EA-093BLA1	200 ball FBGA, lead free
		IS46LQ32128EA-093B2LA1	200 ball FBGA, lead free, ERR
1333 MHz	-075	IS46LQ32128EA-075BLA1	200 ball FBGA, lead free
		IS46LQ32128EA-075B2LA1	200 ball FBGA, lead free, ERR
1600 MHz	-062	IS46LQ32128EA-062BLA1	200 ball FBGA, lead free
		IS46LQ32128EA-062B2LA1	200 ball FBGA, lead free, ERR

Automotive, A2 Range: $T_c = -40^{\circ}\text{C}$ to $+105^{\circ}\text{C}$

Clock	Speed Grade	Order Part No.	Package
1066 MHz	-093	IS46LQ32128EA-093BLA2	200 ball FBGA, lead free
		IS46LQ32128EA-093B2LA2	200 ball FBGA, lead free, ERR
1333 MHz	-075	IS46LQ32128EA-075BLA2	200 ball FBGA, lead free
		IS46LQ32128EA-075B2LA2	200 ball FBGA, lead free, ERR
1600 MHz	-062	IS46LQ32128EA-062BLA2	200 ball FBGA, lead free
		IS46LQ32128EA-062B2LA2	200 ball FBGA, lead free, ERR

ORDERING INFORMATION, 128Mb x 32 LPDDR4X

Industrial Range: T_c = -40°C to +85°C

Clock	Speed Grade	Order Part No.	Package
1066 MHz	-093	IS43LQ32128EAL-093BLI	200 ball FBGA, lead free
		IS43LQ32128EAL-093B2LI	200 ball FBGA, lead free, ERR
1333 MHz	-075	IS43LQ32128EAL-075BLI	200 ball FBGA, lead free
		IS43LQ32128EAL-075B2LI	200 ball FBGA, lead free, ERR
1600 MHz	-062	IS43LQ32128EAL-062BLI	200 ball FBGA, lead free
		IS43LQ32128EAL-062B2LI	200 ball FBGA, lead free, ERR

Automotive, A1 Range: T_c = -40°C to +85°C

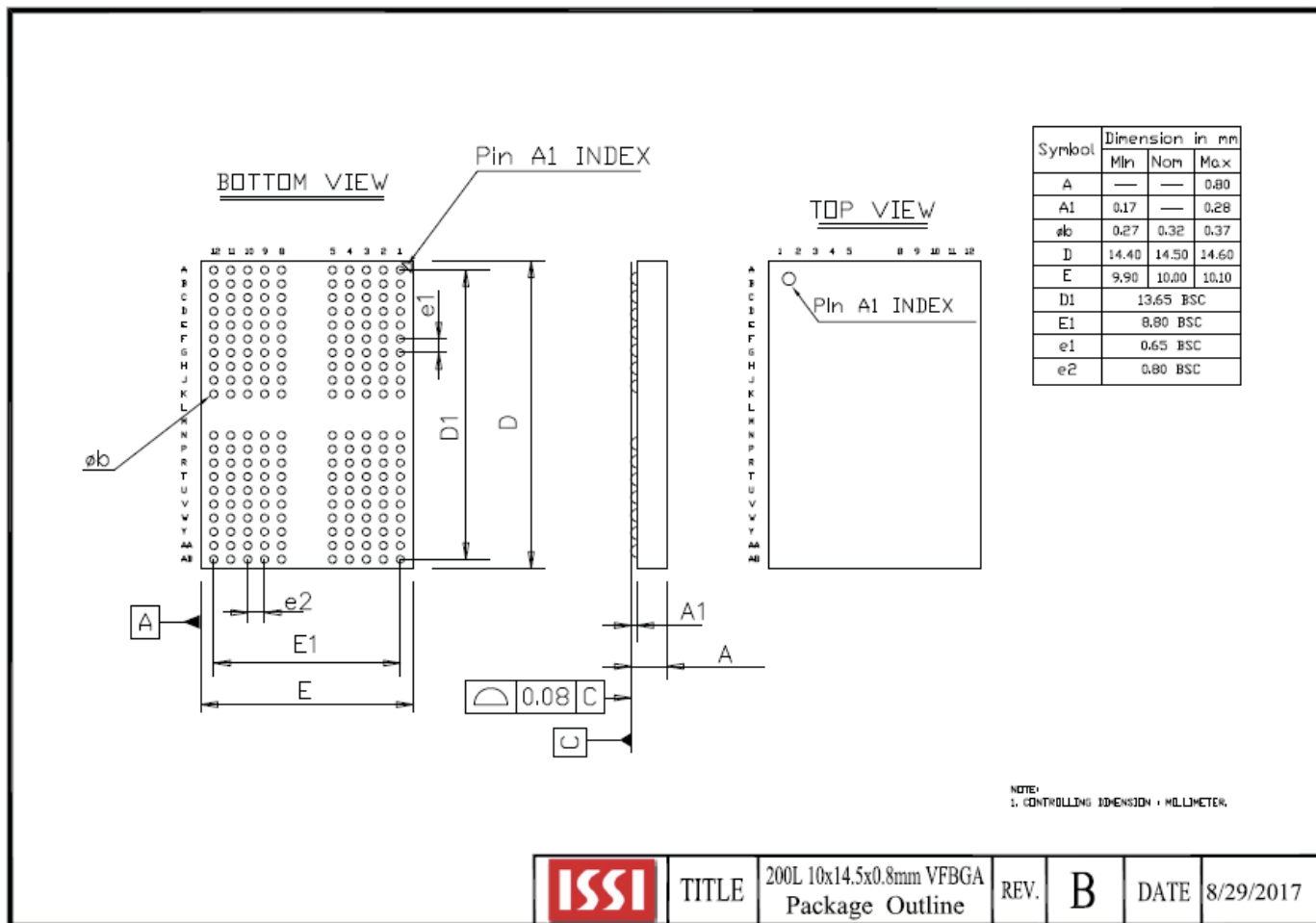
Clock	Speed Grade	Order Part No.	Package
1066 MHz	-093	IS46LQ32128EAL-093BLA1	200 ball FBGA, lead free
		IS46LQ32128EAL-093B2LA1	200 ball FBGA, lead free, ERR
1333 MHz	-075	IS46LQ32128EAL-075BLA1	200 ball FBGA, lead free
		IS46LQ32128EAL-075B2LA1	200 ball FBGA, lead free, ERR
1600 MHz	-062	IS46LQ32128EAL-062BLA1	200 ball FBGA, lead free
		IS46LQ32128EAL-062B2LA1	200 ball FBGA, lead free, ERR

Automotive, A2 Range: T_c = -40°C to +105°C

Clock	Speed Grade	Order Part No.	Package
1066 MHz	-093	IS46LQ32128EAL-093BLA2	200 ball FBGA, lead free
		IS46LQ32128EAL-093B2LA2	200 ball FBGA, lead free, ERR
1333 MHz	-075	IS46LQ32128EAL-075BLA2	200 ball FBGA, lead free
		IS46LQ32128EAL-075B2LA2	200 ball FBGA, lead free, ERR
1600 MHz	-062	IS46LQ32128EAL-062BLA2	200 ball FBGA, lead free
		IS46LQ32128EAL-062B2LA2	200 ball FBGA, lead free, ERR

PACKAGE INFORMATION

200-ball FBGA



ISSI	TITLE	200L 10x14.5x0.8mm VFPGA Package Outline	REV.	B	DATE	8/29/2017
-------------	-------	---	------	----------	------	-----------