

# MOSFET – Power, Single, P-Channel

**-60 V, -61 A, 16 mΩ**

## NVD5117PL

### Features

- Low  $R_{DS(on)}$  to Minimize Conduction Losses
- High Current Capability
- Avalanche Energy Specified
- AEC-Q101 Qualified
- These Devices are Pb-Free, Halogen Free/BFR Free and are RoHS Compliant

### MAXIMUM RATINGS ( $T_J = 25^\circ\text{C}$ unless otherwise noted)

| Symbol         | Parameter   | Value  | Unit             |   |
|----------------|---|--|------------------|---|
| $V_{DSS}$      | Drain-to-Source Voltage   | -60  | V                |   |
| $V_{GS}$       | Gate-to-Source Voltage  | $\pm 20$                                       | V                |   |
| $I_D$          | Continuous Drain Current $R_{\theta JC}$ (Note 1)   | Steady State                                   |                  |   |
|                |   | $T_C = 25^\circ\text{C}$                       | -61              | A |
| $P_D$          | Power Dissipation $R_{\theta JC}$ (Note 1)  | $T_C = 100^\circ\text{C}$                      | -43              |   |
|                |   | $T_C = 25^\circ\text{C}$                       | 118              | W |
| $I_D$          | Continuous Drain Current $R_{\theta JA}$ (Notes 1 & 2)  | Steady State                                   |                  |   |
|                |   | $T_A = 25^\circ\text{C}$                       | -11              | A |
| $P_D$          | Power Dissipation $R_{\theta JA}$ (Notes 1 & 2)   | $T_A = 100^\circ\text{C}$                      | -8               |   |
|                |   | $T_A = 25^\circ\text{C}$                       | 4.1              | W |
| $I_{DM}$       | Pulsed Drain Current  | $T_A = 25^\circ\text{C}, t_p = 10 \mu\text{s}$ | -419             | A |
|                |   | $T_A = 100^\circ\text{C}$                      | 2.1              |   |
| $I_{Dmaxpkg}$  | Current Limited by Package (Note 3)   | $T_A = 25^\circ\text{C}$                       | 60               | A |
| $T_J, T_{stg}$ | Operating Junction and Storage Temperature  | -55 to 175                                     | $^\circ\text{C}$ |   |
| $I_S$          | Source Current (Body Diode)   | -118   | A                |   |
| $E_{AS}$       | Single Pulse Drain-to-Source Avalanche Energy ( $T_J = 25^\circ\text{C}, V_{DD} = 50 \text{ V}, V_{GS} = 10 \text{ V}, I_{L(pk)} = 40 \text{ A}, L = 0.3 \text{ mH}, R_G = 25 \Omega$ ) | 240  | mJ               |   |
| $T_L$          | Lead Temperature for Soldering Purposes (1/8" from case for 10 s)   | 260  | $^\circ\text{C}$ |   |

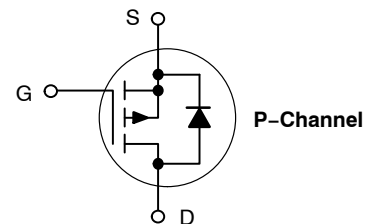
Stresses exceeding those listed in the Maximum Ratings table may damage the device. If any of these limits are exceeded, device functionality should not be assumed, damage may occur and reliability may be affected.

### THERMAL RESISTANCE MAXIMUM RATINGS

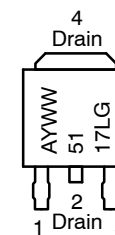
| Symbol          | Parameter                                   | Value | Unit                      |
|-----------------|---|-------|---------------------------|
| $R_{\theta JC}$ | Junction-to-Case – Steady State (Drain)     | 1.3   | $^\circ\text{C}/\text{W}$ |
| $R_{\theta JA}$ | Junction-to-Ambient – Steady State (Note 2) | 37    |                           |

1. The entire application environment impacts the thermal resistance values shown, they are not constants and are only valid for the particular conditions noted.
2. Surface-mounted on FR4 board using a 650 mm<sup>2</sup>, 2 oz. Cu pad.
3. Maximum current for pulses as long as 1 second is higher but is dependent on pulse duration and duty cycle.

| $V_{(BR)DSS}$ | $R_{DS(on)}$   | $I_D$ |
|---------------|----------------|-------|
| -60 V         | 16 mΩ @ -10 V  | -61 A |
|               | 22 mΩ @ -4.5 V |       |



### MARKING DIAGRAMS & PIN ASSIGNMENT



1 Drain 3  
Gate Source

- A = Assembly Location\*
- Y = Year
- WW = Work Week
- 5117L = Device Code
- G = Pb-Free Package

\* The Assembly Location Code (A) is front side optional. In cases where the Assembly Location is stamped in the package bottom (molding ejector pin), the front side assembly code may be blank.

### ORDERING INFORMATION

See detailed ordering, marking and shipping information in the package dimensions section on page 5 of this data sheet.

NOTE: Some of the devices on this data sheet have been **DISCONTINUED**. Please refer to the table on page 5.

# NVD5117PL

## ELECTRICAL CHARACTERISTICS (T<sub>J</sub> = 25°C unless otherwise noted)

| Symbol | Parameter | Test Condition | Min | Typ | Max | Unit |
|--------|-----------|----------------|-----|-----|-----|------|
|--------|-----------|----------------|-----|-----|-----|------|

### OFF CHARACTERISTICS

|                      |                                   |   |     |                        |      |      |
|----------------------|-----------------------------------|---|-----|------------------------|------|------|
| V <sub>(BR)DSS</sub> | Drain-to-Source Breakdown Voltage | V <sub>GS</sub> = 0 V, I <sub>D</sub> = -250 μA   | -60 |                        |      | V    |
| I <sub>DSS</sub>     | Zero Gate Voltage Drain Current   | V <sub>GS</sub> = 0 V,<br>V <sub>DS</sub> = -60 V |     | T <sub>J</sub> = 25°C  |      | -1.0 |
|                      |                                   |   |     | T <sub>J</sub> = 125°C |      | -100 |
| I <sub>GSS</sub>     | Gate-to-Source Leakage Current    | V <sub>DS</sub> = 0 V, V <sub>GS</sub> = ±20 V    |     |                        | ±100 | nA   |

### ON CHARACTERISTICS (Note 4)

|                     |                               |  |      |    |      |    |
|---------------------|-------------------------------|--|------|----|------|----|
| V <sub>GS(TH)</sub> | Gate Threshold Voltage        | V <sub>GS</sub> = V <sub>DS</sub> , I <sub>D</sub> = -250 μA | -1.5 |    | -2.5 | V  |
| R <sub>DS(on)</sub> | Drain-to-Source On Resistance | V <sub>GS</sub> = -10 V, I <sub>D</sub> = -29 A              |      | 12 | 16   | mΩ |
|                     |                               |  |      | 16 | 22   |    |
| g <sub>FS</sub>     | Forward Transconductance      | V <sub>DS</sub> = -15 V, I <sub>D</sub> = -15 A              |      | 30 |      | S  |

### CHARGES AND CAPACITANCES

|                     |                              |  |  |                          |    |    |
|---------------------|------------------------------|--|--|--------------------------|----|----|
| C <sub>iss</sub>    | Input Capacitance            | V <sub>GS</sub> = 0 V, f = 1.0 MHz,<br>V <sub>DS</sub> = -25 V               |  | 4800                     |    | pF |
| C <sub>oss</sub>    | Output Capacitance           |  |  | 480                      |    |    |
| C <sub>rss</sub>    | Reverse Transfer Capacitance |  |  | 320                      |    |    |
| Q <sub>G(TOT)</sub> | Total Gate Charge            | V <sub>DS</sub> = -48 V,<br>I <sub>D</sub> = -29 A                           |  | V <sub>GS</sub> = -4.5 V | 49 | nC |
|                     |                              |  |  | V <sub>GS</sub> = -10 V  | 85 |    |
| Q <sub>G(TH)</sub>  | Threshold Gate Charge        | V <sub>GS</sub> = -4.5 V, V <sub>DS</sub> = -48 V,<br>I <sub>D</sub> = -29 A |  | 3                        |    |    |
| Q <sub>GS</sub>     | Gate-to-Source Charge        |  |  | 13                       |    |    |
| Q <sub>GD</sub>     | Gate-to-Drain Charge         |  |  | 28                       |    |    |
| V <sub>GP</sub>     | Plateau Voltage              |  |  | 3.2                      |    |    |

### SWITCHING CHARACTERISTICS (Notes 4)

|                     |                     |  |  |     |  |    |
|---------------------|---------------------|--|--|-----|--|----|
| t <sub>d(on)</sub>  | Turn-On Delay Time  | V <sub>GS</sub> = -4.5 V, V <sub>DS</sub> = -48 V,<br>I <sub>D</sub> = -29 A, R <sub>G</sub> = 2.5 Ω |  | 22  |  | ns |
| t <sub>r</sub>      | Rise Time           |  |  | 195 |  |    |
| t <sub>d(off)</sub> | Turn-Off Delay Time |  |  | 50  |  |    |
| t <sub>f</sub>      | Fall Time           |  |  | 132 |  |    |

### DRAIN-SOURCE DIODE CHARACTERISTICS

|                 |                         |  |  |                        |       |      |    |
|-----------------|-------------------------|--|--|------------------------|-------|------|----|
| V <sub>SD</sub> | Forward Diode Voltage   | V <sub>GS</sub> = 0 V,<br>I <sub>S</sub> = -29 A                   |  | T <sub>J</sub> = 25°C  | -0.86 | -1.0 | V  |
|                 |                         |  |  | T <sub>J</sub> = 125°C | -0.74 |      |    |
| t <sub>RR</sub> | Reverse Recovery Time   | V <sub>GS</sub> = 0 V, di/dt = 100 A/μs,<br>I <sub>S</sub> = -29 A |  | 36                     |       | ns   |    |
| t <sub>a</sub>  | Charge Time             |  |  | 19                     |       |      |    |
| t <sub>b</sub>  | Discharge Time          |  |  | 17                     |       |      |    |
| Q <sub>RR</sub> | Reverse Recovery Charge |  |  | 44                     |       |      | nC |

Product parametric performance is indicated in the Electrical Characteristics for the listed test conditions, unless otherwise noted. Product performance may not be indicated by the Electrical Characteristics if operated under different conditions.

4. Pulse Test: Pulse Width ≤ 300 μs, Duty Cycle ≤ 2%.

# NVD5117PL

## TYPICAL CHARACTERISTICS

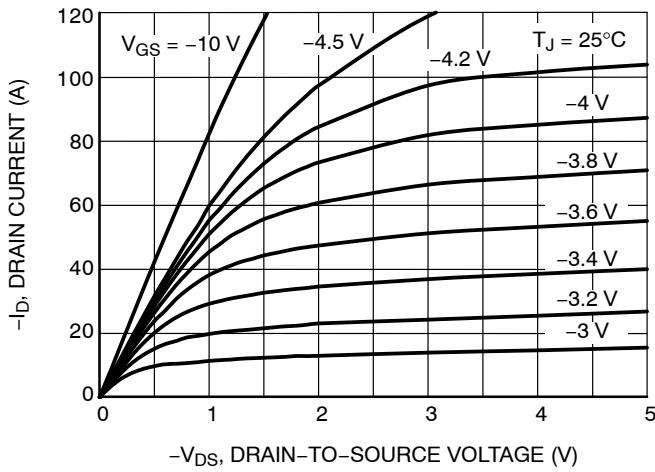


Figure 1. On-Region Characteristics

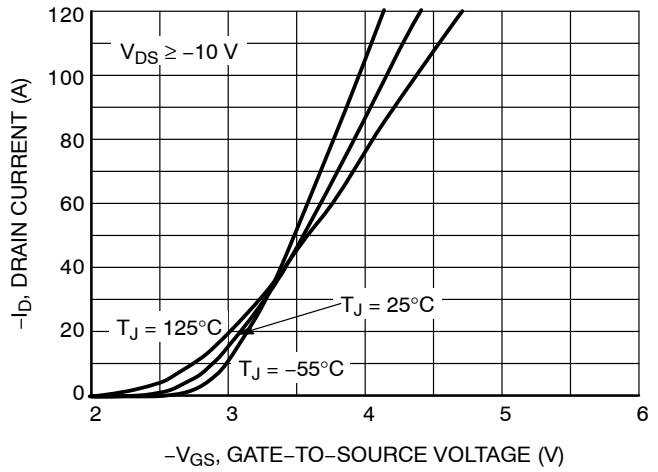


Figure 2. Transfer Characteristics

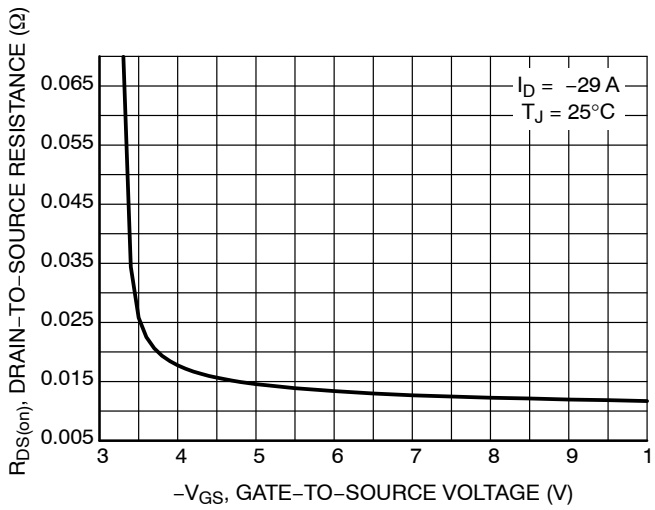


Figure 3. On-Resistance vs. Gate-to-Source Voltage

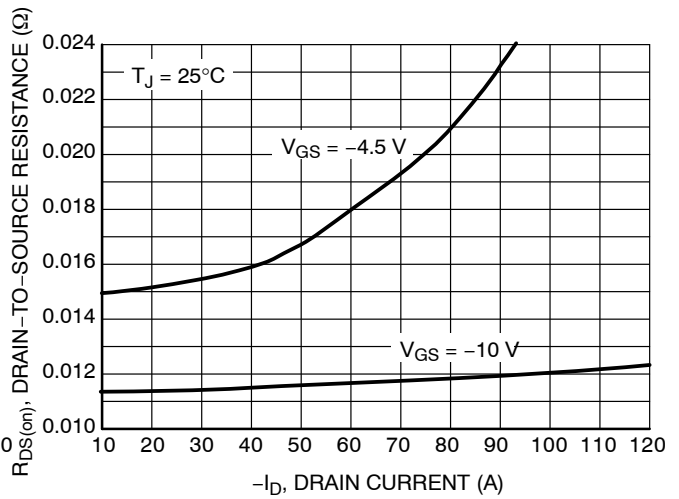


Figure 4. On-Resistance vs. Drain Current and Gate Voltage

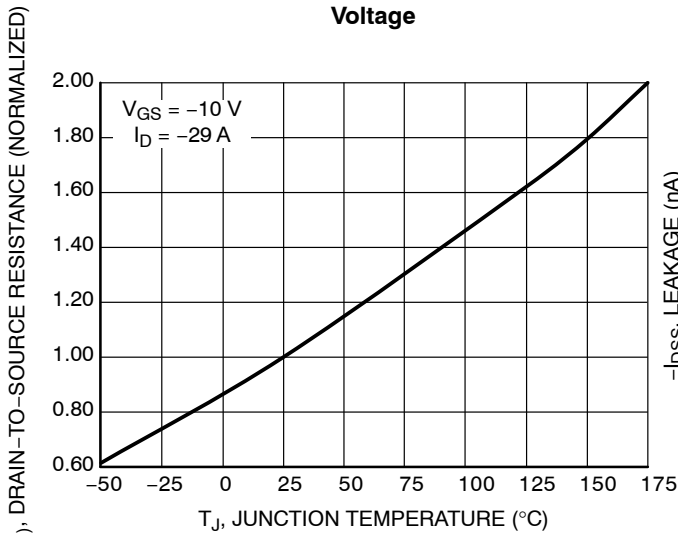


Figure 5. On-Resistance Variation with Temperature

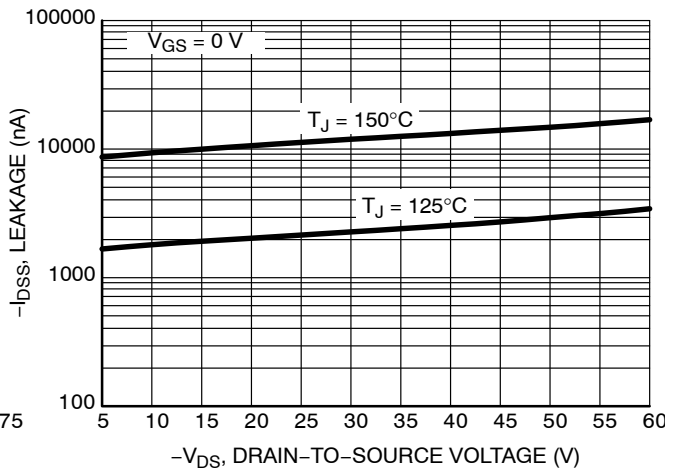


Figure 6. Drain-to-Source Leakage Current vs. Voltage

# NVD5117PL

## TYPICAL CHARACTERISTICS (continued)

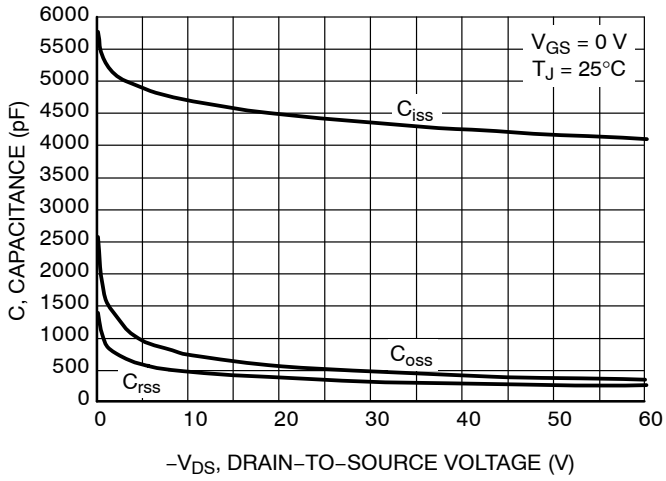


Figure 7. Capacitance Variation

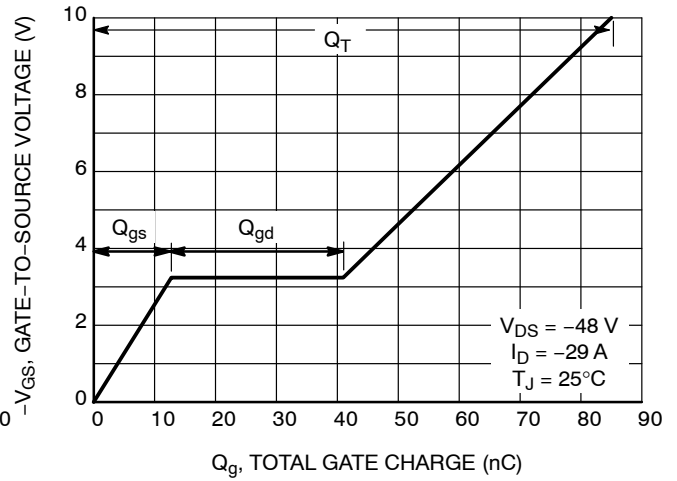


Figure 8. Gate-to-Source vs. Total Charge

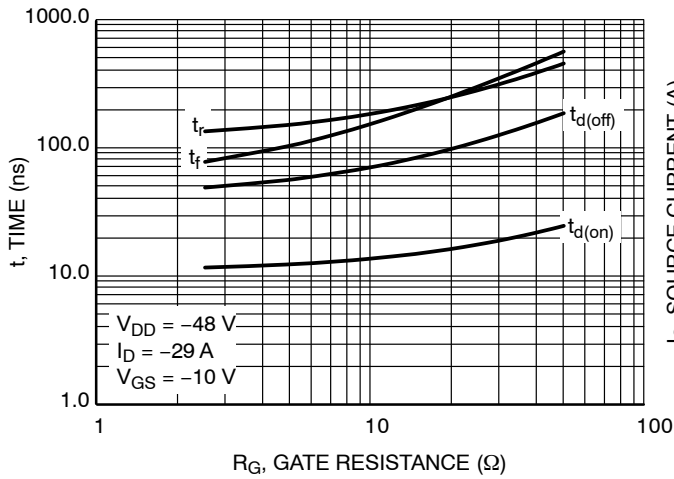


Figure 9. Resistive Switching Time Variation vs. Gate Resistance

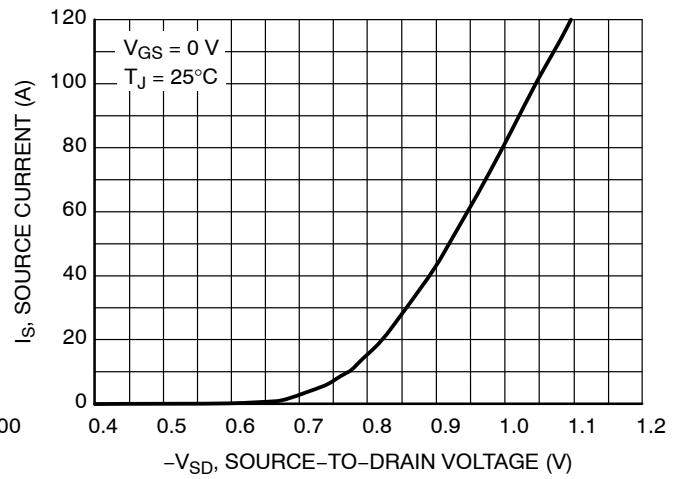


Figure 10. Diode Forward Voltage vs. Current

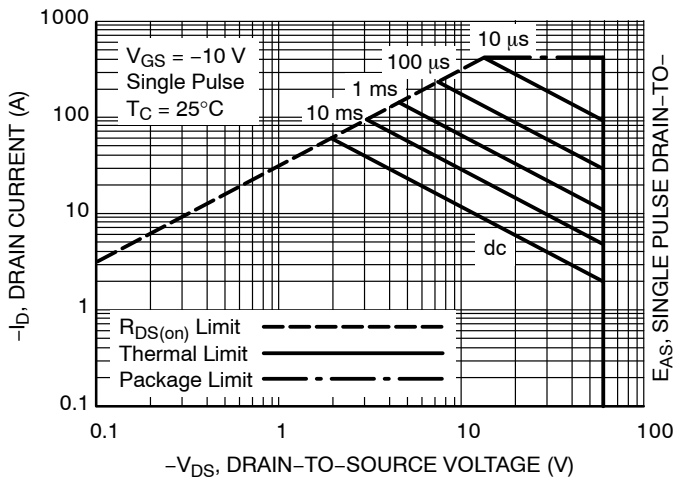


Figure 11. Maximum Rated Forward Biased Safe Operating Area

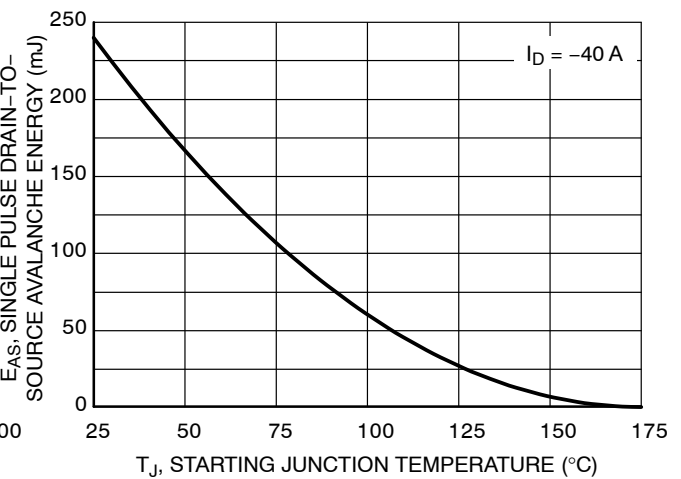


Figure 12. Maximum Avalanche Energy vs. Starting Junction Temperature

# NVD5117PL

## TYPICAL CHARACTERISTICS (continued)

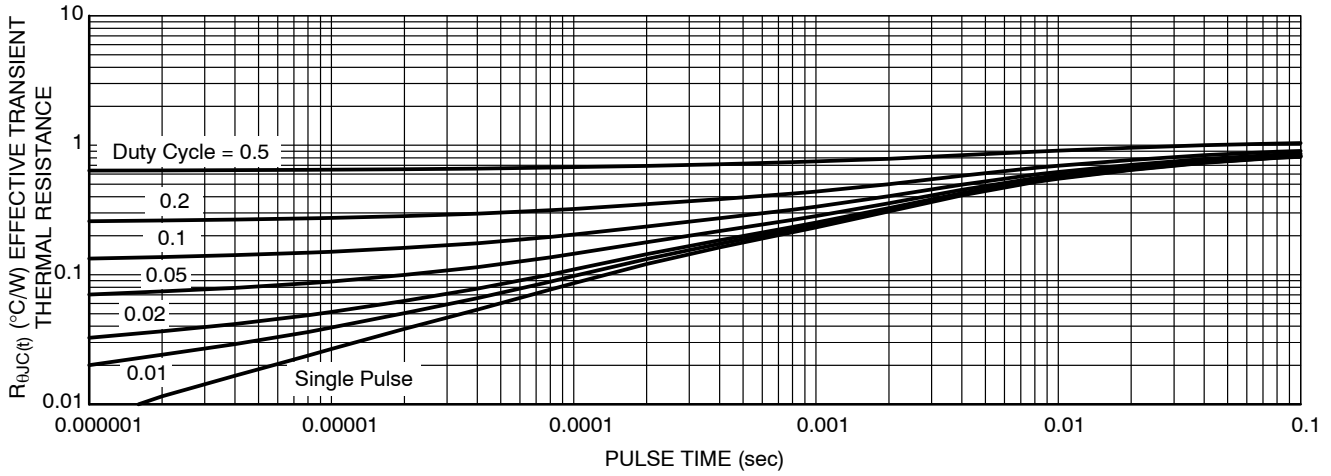


Figure 13. Thermal Response

### DEVICE ORDERING INFORMATION

| Device            | Package           | Shipping <sup>†</sup> |
|-------------------|-------------------|-----------------------|
| NVD5117PLT4G-VF01 | DPAK<br>(Pb-Free) | 2500 / Tape & Reel    |

### DISCONTINUED (Note 5)

|              |                   |                    |
|--------------|-------------------|--------------------|
| NVD5117PLT4G | DPAK<br>(Pb-Free) | 2500 / Tape & Reel |
|--------------|-------------------|--------------------|

<sup>†</sup>For information on tape and reel specifications, including part orientation and tape sizes, please refer to our Tape and Reel Packaging Specifications Brochure, [BRD8011/D](#).

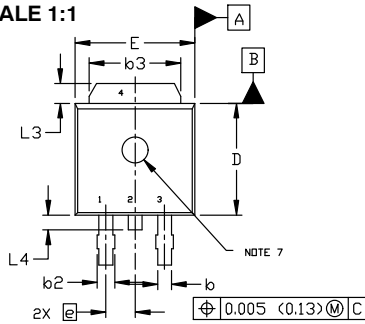
5. **DISCONTINUED:** This device is not recommended for new design. Please contact your **onsemi** representative for information. The most current information on this device may be available on [www.onsemi.com](http://www.onsemi.com).



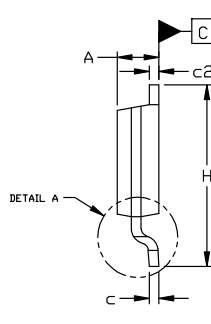
DPAK (SINGLE GAUGE)  
CASE 369C  
ISSUE G

DATE 31 MAY 2023

SCALE 1:1



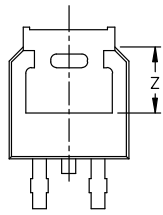
TOP VIEW



SIDE VIEW



BOTTOM VIEW



BOTTOM VIEW

ALTERNATE CONSTRUCTIONS



RECOMMENDED MOUNTING FOOTPRINT\*

\*FOR ADDITIONAL INFORMATION ON OUR Pb-FREE STRATEGY AND SOLDERING DETAILS, PLEASE DOWNLOAD THE ON SEMICONDUCTOR SOLDERING AND MOUNTING TECHNIQUES REFERENCE MANUAL, SOLDERRM/D.

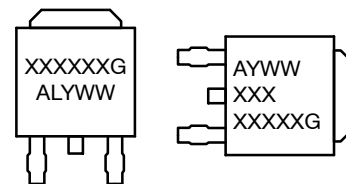
- STYLE 1: PIN 1. BASE  
2. COLLECTOR  
3. EMITTER  
4. COLLECTOR
- STYLE 2: PIN 1. GATE  
2. DRAIN  
3. SOURCE  
4. DRAIN
- STYLE 3: PIN 1. ANODE  
2. CATHODE  
3. ANODE  
4. CATHODE
- STYLE 4: PIN 1. CATHODE  
2. ANODE  
3. GATE  
4. ANODE
- STYLE 5: PIN 1. GATE  
2. ANODE  
3. CATHODE  
4. ANODE
- STYLE 6: PIN 1. MT1  
2. MT2  
3. GATE  
4. MT2
- STYLE 7: PIN 1. GATE  
2. COLLECTOR  
3. EMITTER  
4. COLLECTOR
- STYLE 8: PIN 1. N/C  
2. CATHODE  
3. ANODE  
4. CATHODE
- STYLE 9: PIN 1. ANODE  
2. CATHODE  
3. RESISTOR ADJUST  
4. CATHODE
- STYLE 10: PIN 1. CATHODE  
2. ANODE  
3. CATHODE  
4. ANODE

NOTES:

1. DIMENSIONING AND TOLERANCING ASME Y14.5M, 1994.
2. CONTROLLING DIMENSION: INCHES
3. THERMAL PAD CONTOUR OPTIONAL WITHIN DIMENSIONS b3, L3, AND Z.
4. DIMENSIONS D AND E DO NOT INCLUDE MOLD FLASH, PROTRUSIONS, OR BURRS. MOLD FLASH, PROTRUSIONS, OR GATE BURRS SHALL NOT EXCEED 0.006 INCHES PER SIDE.
5. DIMENSIONS D AND E ARE DETERMINED AT THE OUTERMOST EXTREMES OF THE PLASTIC BODY.
6. DATUMS A AND B ARE DETERMINED AT DATUM PLANE H.
7. OPTIONAL MOLD FEATURE.

| DIM | INCHES |       | MILLIMETERS |       |
|-----|--------|-------|-------------|-------|
|     | MIN.   | MAX.  | MIN.        | MAX.  |
| A   | 0.086  | 0.094 | 2.18        | 2.38  |
| A1  | 0.000  | 0.005 | 0.00        | 0.13  |
| b   | 0.025  | 0.035 | 0.63        | 0.89  |
| b2  | 0.028  | 0.045 | 0.72        | 1.14  |
| b3  | 0.180  | 0.215 | 4.57        | 5.46  |
| c   | 0.018  | 0.024 | 0.46        | 0.61  |
| c2  | 0.018  | 0.024 | 0.46        | 0.61  |
| D   | 0.235  | 0.245 | 5.97        | 6.22  |
| E   | 0.250  | 0.265 | 6.35        | 6.73  |
| e   | 0.090  | BSC   | 2.29        | BSC   |
| H   | 0.370  | 0.410 | 9.40        | 10.41 |
| L   | 0.055  | 0.070 | 1.40        | 1.78  |
| L1  | 0.114  | REF   | 2.90        | REF   |
| L2  | 0.020  | BSC   | 0.51        | BSC   |
| L3  | 0.035  | 0.050 | 0.89        | 1.27  |
| L4  | ----   | 0.040 | ---         | 1.01  |
| Z   | 0.155  | ----  | 3.93        | ---   |

GENERIC MARKING DIAGRAM\*



- IC
- Discrete
- XXXXXX = Device Code
- A = Assembly Location
- L = Wafer Lot
- Y = Year
- WW = Work Week
- G = Pb-Free Package

\*This information is generic. Please refer to device data sheet for actual part marking. Pb-Free indicator, "G" or microdot "•", may or may not be present. Some products may not follow the Generic Marking.

|                  |                     |  |
|------------------|---------------------|--|
| DOCUMENT NUMBER: | 98AON10527D         | Electronic versions are uncontrolled except when accessed directly from the Document Repository. Printed versions are uncontrolled except when stamped "CONTROLLED COPY" in red. |
| DESCRIPTION:     | DPAK (SINGLE GAUGE) | PAGE 1 OF 1  |

onsemi and Onsemi are trademarks of Semiconductor Components Industries, LLC dba onsemi or its subsidiaries in the United States and/or other countries. onsemi reserves the right to make changes without further notice to any products herein. onsemi makes no warranty, representation or guarantee regarding the suitability of its products for any particular purpose, nor does onsemi assume any liability arising out of the application or use of any product or circuit, and specifically disclaims any and all liability, including without limitation special, consequential or incidental damages. onsemi does not convey any license under its patent rights nor the rights of others.

**onsemi**, **Onsemi**, and other names, marks, and brands are registered and/or common law trademarks of Semiconductor Components Industries, LLC dba "**onsemi**" or its affiliates and/or subsidiaries in the United States and/or other countries. **onsemi** owns the rights to a number of patents, trademarks, copyrights, trade secrets, and other intellectual property. A listing of **onsemi**'s product/patent coverage may be accessed at [www.onsemi.com/site/pdf/Patent-Marking.pdf](http://www.onsemi.com/site/pdf/Patent-Marking.pdf). **onsemi** reserves the right to make changes at any time to any products or information herein, without notice. The information herein is provided "as-is" and **onsemi** makes no warranty, representation or guarantee regarding the accuracy of the information, product features, availability, functionality, or suitability of its products for any particular purpose, nor does **onsemi** assume any liability arising out of the application or use of any product or circuit, and specifically disclaims any and all liability, including without limitation special, consequential or incidental damages. Buyer is responsible for its products and applications using **onsemi** products, including compliance with all laws, regulations and safety requirements or standards, regardless of any support or applications information provided by **onsemi**. "Typical" parameters which may be provided in **onsemi** data sheets and/or specifications can and do vary in different applications and actual performance may vary over time. All operating parameters, including "Typicals" must be validated for each customer application by customer's technical experts. **onsemi** does not convey any license under any of its intellectual property rights nor the rights of others. **onsemi** products are not designed, intended, or authorized for use as a critical component in life support systems or any FDA Class 3 medical devices or medical devices with a same or similar classification in a foreign jurisdiction or any devices intended for implantation in the human body. Should Buyer purchase or use **onsemi** products for any such unintended or unauthorized application, Buyer shall indemnify and hold **onsemi** and its officers, employees, subsidiaries, affiliates, and distributors harmless against all claims, costs, damages, and expenses, and reasonable attorney fees arising out of, directly or indirectly, any claim of personal injury or death associated with such unintended or unauthorized use, even if such claim alleges that **onsemi** was negligent regarding the design or manufacture of the part. **onsemi** is an Equal Opportunity/Affirmative Action Employer. This literature is subject to all applicable copyright laws and is not for resale in any manner.

## ADDITIONAL INFORMATION

### TECHNICAL PUBLICATIONS:

Technical Library: [www.onsemi.com/design/resources/technical-documentation](http://www.onsemi.com/design/resources/technical-documentation)  
onsemi Website: [www.onsemi.com](http://www.onsemi.com)

### ONLINE SUPPORT: [www.onsemi.com/support](http://www.onsemi.com/support)

For additional information, please contact your local Sales Representative at [www.onsemi.com/support/sales](http://www.onsemi.com/support/sales)